

Discharge Measurement Summary

Site name Center5
Site number 05
Operator(s) VAllen
File name Center5_20230615-101639.ft
Comment

Start time	6/15/2023 9:07 AM	Sensor type	Top Setting
End time	6/15/2023 10:14 AM	Handheld serial number	FT2H2219029
Start location latitude	43.029	Probe serial number	FT2P2219014
Start location longitude	-118.843	Probe firmware	1.30
Calculations engine	FlowTracker2	Handheld software	1.7

# Stations	Avg interval (s)	Total discharge (m³/s)
26	40	0.2798

Total width (m)	Total area (m²)	Wetted Perimeter (m)
7.742	5.71567	8.179

Mean SNR (dB)	Mean depth (m)	Mean velocity (m/s)
37	0.738	0.0490

Mean temp (°C)	Max depth (m)	Max velocity (m/s)
13.016	1.039	0.1450

Discharge Uncertainty		
Category	ISO	IVE
Accuracy	1.0%	1.0%
Depth	0.1%	0.8%
Velocity	1.8%	3.3%
Width	0.1%	0.1%
Method	0.8%	
# Stations	2.0%	
Overall	3.0%	3.6%

Discharge equation	Mid Section
Discharge uncertainty	IVE
Discharge reference	Rated

Data Collection Settings	
Salinity	0.000 PSS-78
Temperature	-
Sound speed	-
Mounting correction	0.000 %

Summary overview

No changes were made to this file
Quality control warnings



Discharge Measurement Summary

Site name Center5
Site number 05
Operator(s) VAllen
File name Center5_20230615-101639.ft
Comment

Station Warning Settings

Station discharge OK

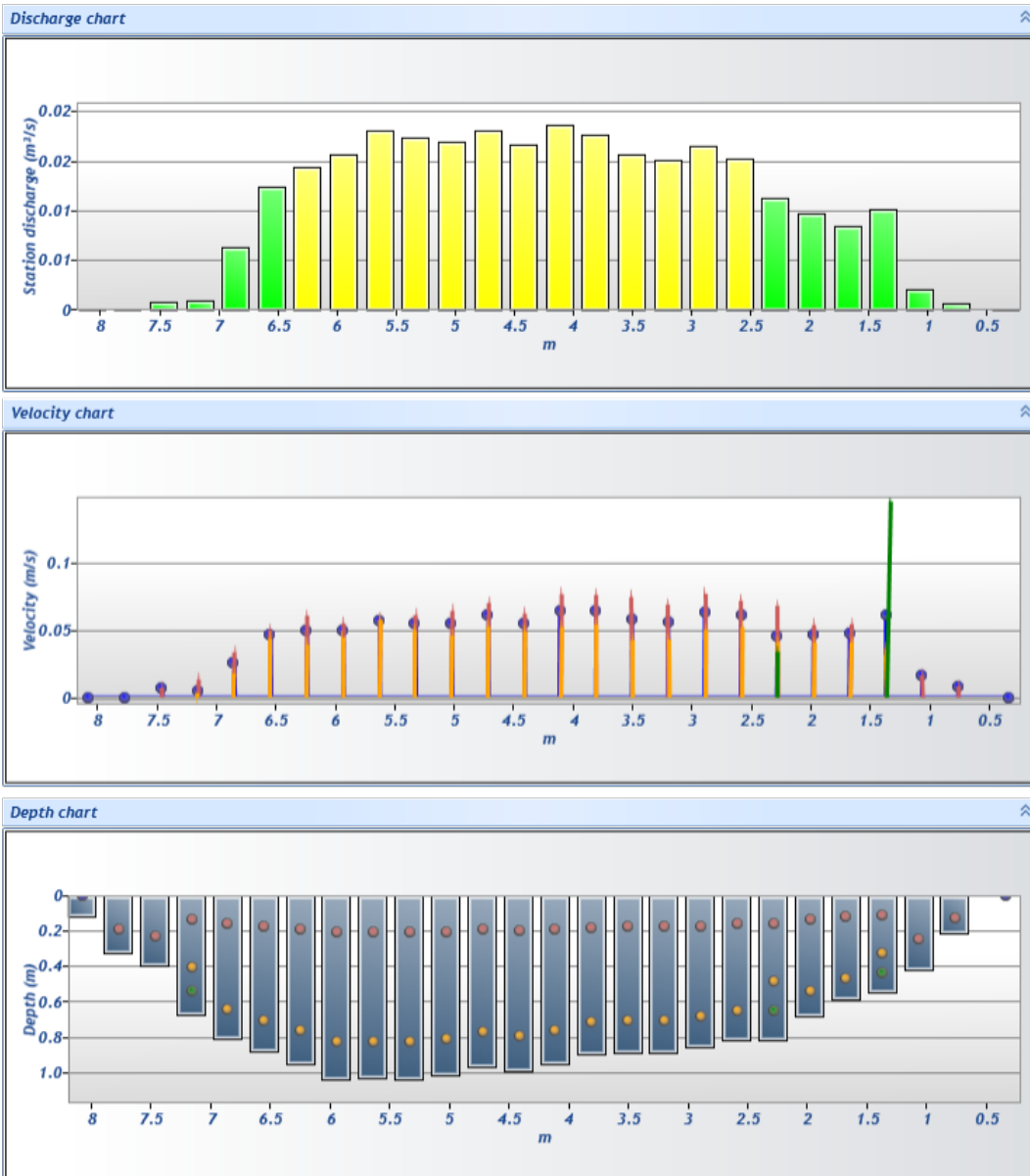
Station discharge < 5.00%

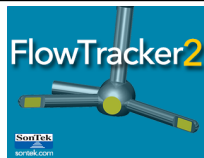
Station discharge caution

5.00% >= Station discharge < 10.00%

Station discharge warning

Station discharge >= 10.00%



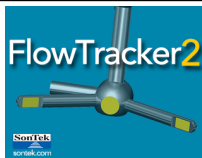


Discharge Measurement Summary

Site name Center5
Site number 05
Operator(s) VAllen
File name Center5_20230615-101639.ft
Comment

Measurement results

St#	Time	Location (m)	Method	Depth (m)	%Depth	Measured Depth (m)	Samples	Velocity (m/s)	Correction	Mean Velocity (m/s)	Area (m ²)	Flow (m ³ /s)	%Q	
0	9:07 AM	0.335	None	0.000	0.0000	0.000	0	0.0000	1.0000	0.0086	0.00000	0.0000	0.00	✓
1	9:07 AM	0.762	0.6	0.210	0.6000	0.126	80	0.0086	1.0000	0.0086	0.07692	0.0007	0.24	✓
2	9:09 AM	1.067	0.6	0.415	0.6000	0.249	80	0.0164	1.0000	0.0164	0.12635	0.0021	0.74	✓
3	9:11 AM	1.372	0.2/0.6/0.8	0.546	0.2000	0.109	80	0.0368	1.0000	0.0612	0.16630	0.0102	3.64	✓
3	9:11 AM	1.372	0.2/0.6/0.8	0.546	0.6000	0.327	80	0.0315	1.0000	0.0612	0.16630	0.0102	3.64	✓
3	9:11 AM	1.372	0.2/0.6/0.8	0.546	0.8000	0.436	80	0.1450	1.0000	0.0612	0.16630	0.0102	3.64	✓
4	9:14 AM	1.676	0.2/0.8	0.588	0.2000	0.118	80	0.0542	1.0000	0.0475	0.17930	0.0085	3.04	✓
4	9:14 AM	1.676	0.2/0.8	0.588	0.8000	0.471	80	0.0407	1.0000	0.0475	0.17930	0.0085	3.04	✓
5	9:17 AM	1.981	0.2/0.8	0.680	0.2000	0.136	80	0.0535	1.0000	0.0470	0.20717	0.0097	3.48	✓
5	9:17 AM	1.981	0.2/0.8	0.680	0.8000	0.544	80	0.0404	1.0000	0.0470	0.20717	0.0097	3.48	✓
6	9:20 AM	2.286	0.2/0.6/0.8	0.814	0.2000	0.163	80	0.0678	1.0000	0.0459	0.24805	0.0114	4.07	✓
6	9:20 AM	2.286	0.2/0.6/0.8	0.814	0.6000	0.488	80	0.0409	1.0000	0.0459	0.24805	0.0114	4.07	✓
6	9:20 AM	2.286	0.2/0.6/0.8	0.814	0.8000	0.651	80	0.0338	1.0000	0.0459	0.24805	0.0114	4.07	✓
7	9:24 AM	2.591	0.2/0.8	0.814	0.2000	0.163	80	0.0714	1.0000	0.0616	0.24805	0.0153	5.46	✓
7	9:24 AM	2.591	0.2/0.8	0.814	0.8000	0.651	80	0.0517	1.0000	0.0616	0.24805	0.0153	5.46	✓
8	9:27 AM	2.896	0.2/0.8	0.856	0.2000	0.171	80	0.0768	1.0000	0.0634	0.26106	0.0166	5.92	✓
8	9:27 AM	2.896	0.2/0.8	0.856	0.8000	0.685	80	0.0500	1.0000	0.0634	0.26106	0.0166	5.92	✓
9	9:29 AM	3.200	0.2/0.8	0.887	0.2000	0.177	80	0.0687	1.0000	0.0558	0.27035	0.0151	5.39	✓
9	9:29 AM	3.200	0.2/0.8	0.887	0.8000	0.710	80	0.0429	1.0000	0.0558	0.27035	0.0151	5.39	✓
10	9:32 AM	3.505	0.2/0.8	0.884	0.2000	0.177	80	0.0744	1.0000	0.0584	0.26942	0.0157	5.62	✓
10	9:32 AM	3.505	0.2/0.8	0.884	0.8000	0.707	80	0.0424	1.0000	0.0584	0.26942	0.0157	5.62	✓
11	9:35 AM	3.810	0.2/0.8	0.896	0.2000	0.179	80	0.0761	1.0000	0.0650	0.27313	0.0177	6.34	✓
11	9:35 AM	3.810	0.2/0.8	0.896	0.8000	0.717	80	0.0539	1.0000	0.0650	0.27313	0.0177	6.34	✓
12	9:37 AM	4.115	0.2/0.8	0.951	0.2000	0.190	80	0.0764	1.0000	0.0642	0.28986	0.0186	6.66	✓
12	9:37 AM	4.115	0.2/0.8	0.951	0.8000	0.761	80	0.0521	1.0000	0.0642	0.28986	0.0186	6.66	✓
13	9:44 AM	4.420	0.2/0.8	0.991	0.2000	0.198	80	0.0619	1.0000	0.0554	0.30193	0.0167	5.98	✓
13	9:44 AM	4.420	0.2/0.8	0.991	0.8000	0.792	80	0.0488	1.0000	0.0554	0.30193	0.0167	5.98	✓
14	9:46 AM	4.724	0.2/0.8	0.969	0.2000	0.194	80	0.0698	1.0000	0.0612	0.29543	0.0181	6.46	✓
14	9:46 AM	4.724	0.2/0.8	0.969	0.8000	0.775	80	0.0525	1.0000	0.0612	0.29543	0.0181	6.46	✓
15	9:49 AM	5.029	0.2/0.8	1.015	0.2000	0.203	80	0.0639	1.0000	0.0547	0.30937	0.0169	6.05	✓
15	9:49 AM	5.029	0.2/0.8	1.015	0.8000	0.812	80	0.0456	1.0000	0.0547	0.30937	0.0169	6.05	✓
16	9:51 AM	5.334	0.2/0.8	1.039	0.2000	0.208	80	0.0609	1.0000	0.0551	0.31680	0.0175	6.24	✓
16	9:51 AM	5.334	0.2/0.8	1.039	0.8000	0.831	80	0.0494	1.0000	0.0551	0.31680	0.0175	6.24	✓
17	9:54 AM	5.639	0.2/0.8	1.030	0.2000	0.206	80	0.0580	1.0000	0.0576	0.31401	0.0181	6.47	✓
17	9:54 AM	5.639	0.2/0.8	1.030	0.8000	0.824	80	0.0573	1.0000	0.0576	0.31401	0.0181	6.47	✓
18	9:56 AM	5.944	0.2/0.8	1.039	0.2000	0.208	80	0.0548	1.0000	0.0497	0.31680	0.0157	5.62	✓
18	9:56 AM	5.944	0.2/0.8	1.039	0.8000	0.831	80	0.0445	1.0000	0.0497	0.31680	0.0157	5.62	✓
19	9:59 AM	6.248	0.2/0.8	0.954	0.2000	0.191	80	0.0604	1.0000	0.0498	0.29079	0.0145	5.18	✓
19	9:59 AM	6.248	0.2/0.8	0.954	0.8000	0.763	80	0.0392	1.0000	0.0498	0.29079	0.0145	5.18	✓
20	10:01 AM	6.553	0.2/0.8	0.881	0.2000	0.176	80	0.0499	1.0000	0.0466	0.26849	0.0125	4.47	✓
20	10:01 AM	6.553	0.2/0.8	0.881	0.8000	0.705	80	0.0433	1.0000	0.0466	0.26849	0.0125	4.47	✓
21	10:04 AM	6.858	0.2/0.8	0.808	0.2000	0.162	80	0.0334	1.0000	0.0256	0.24619	0.0063	2.26	✓
21	10:04 AM	6.858	0.2/0.8	0.808	0.8000	0.646	80	0.0179	1.0000	0.0256	0.24619	0.0063	2.26	✓
22	10:07 AM	7.163	0.2/0.6/0.8	0.674	0.2000	0.135	80	0.0133	1.0000	0.0050	0.20532	0.0010	0.37	✓
22	10:07 AM	7.163	0.2/0.6/0.8	0.674	0.6000	0.404	80	0.0033	1.0000	0.0050	0.20532	0.0010	0.37	✓
22	10:07 AM	7.163	0.2/0.6/0.8	0.674	0.8000	0.539	80	0.0001	1.0000	0.0050	0.20532	0.0010	0.37	✓
23	10:10 AM	7.468	0.6	0.390	0.6000	0.234	80	0.0072	1.0000	0.0072	0.11892	0.0009	0.30	✓
24	10:13 AM	7.772	0.6	0.320	0.6000	0.192	80	0.0005	1.0000	0.0005	0.09755	0.0001	0.02	✓
25	10:14 AM	8.077	None	0.119	0.0000	0.000	0	0.0000	1.0000	0.0005	0.01812	0.0000	0.00	✓



Discharge Measurement Summary

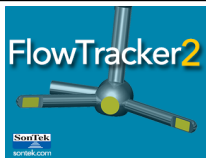
Site name Center5
Site number 05
Operator(s) VAllen
File name Center5_20230615-101639.ft
Comment

Quality Control Settings

Maximum depth change 50.00%
Maximum spacing change 100.00%
SNR threshold 10 dB
Standard error threshold 0.0100 m/s
Spike threshold 10.00%
Maximum velocity angle 20.0 deg
Maximum tilt angle 5.0 deg

Quality control warnings

St#	Time	Location (m)	Method	Depth (m)	%Depth	Measured Depth (m)	Warnings
3	9:11 AM	1.372	0.2/0.6/0.8	0.546	0.2000	0.109	Low SNR,Beam SNRs Not Similar,SNR Threshold Variation,Standard Error > QC
3	9:11 AM	1.372	0.2/0.6/0.8	0.546	0.6000	0.327	Low SNR,Beam SNRs Not Similar,SNR Threshold Variation,Standard Error > QC
3	9:11 AM	1.372	0.2/0.6/0.8	0.546	0.8000	0.436	Low SNR,Beam SNRs Not Similar,SNR Threshold Variation,Standard Error > QC
22	10:07 AM	7.163	0.2/0.6/0.8	0.674	0.2000	0.135	Boundary Interference,Beam SNRs Not Similar,SNR Threshold Variation,High % Spikes
22	10:07 AM	7.163	0.2/0.6/0.8	0.674	0.6000	0.404	Boundary Interference,Beam SNRs Not Similar,SNR Threshold Variation,High % Spikes
22	10:07 AM	7.163	0.2/0.6/0.8	0.674	0.8000	0.539	Boundary Interference,Beam SNRs Not Similar,SNR Threshold Variation,High % Spikes
23	10:10 AM	7.468	0.6	0.390	0.6000	0.234	Beam SNRs Not Similar,Large SNR Variation
24	10:13 AM	7.772	0.6	0.320	0.6000	0.192	Beam SNRs Not Similar,SNR Threshold Variation
25	10:14 AM	8.077	None	0.119	0.0000	0.000	Water Depth > QC



Discharge Measurement Summary

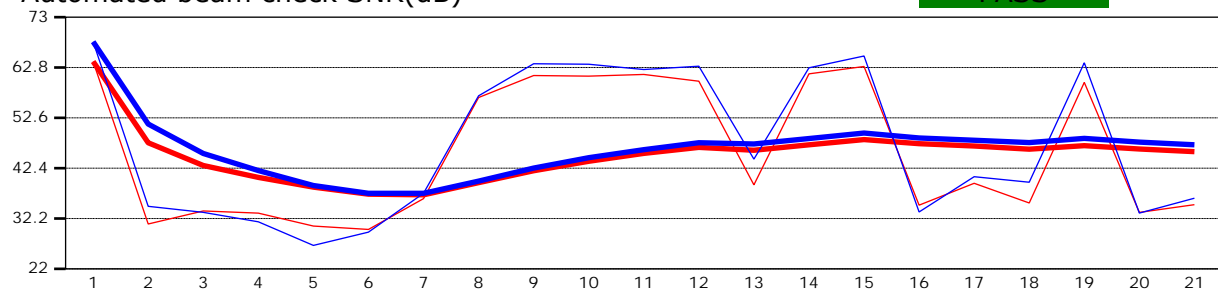
Site name Center5
Site number 05
Operator(s) VAllen
File name Center5_20230615-101639.ft
Comment

Beam 1	
Beam 2	

Automated beam check Start time 6/15/2023 9:06:52 AM

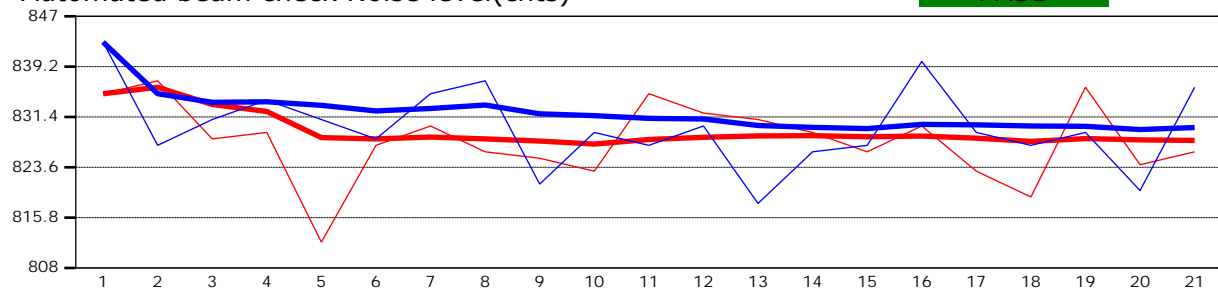
Automated beam check SNR(dB)

PASS



Automated beam check Noise level(cnts)

PASS



Automated beam check Quality control warnings

No quality control warnings



Discharge Measurement Summary

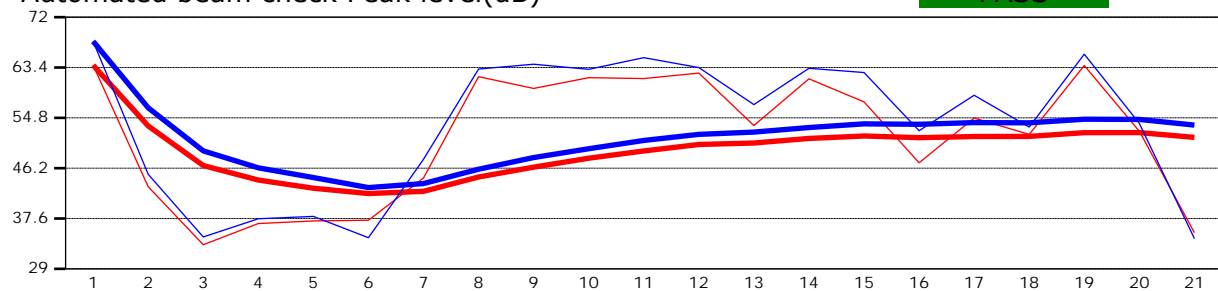
Site name Center5
Site number 05
Operator(s) VAllen
File name Center5_20230615-101639.ft
Comment

Beam 1	
Beam 2	

Automated beam check Start time 6/15/2023 9:06:52 AM

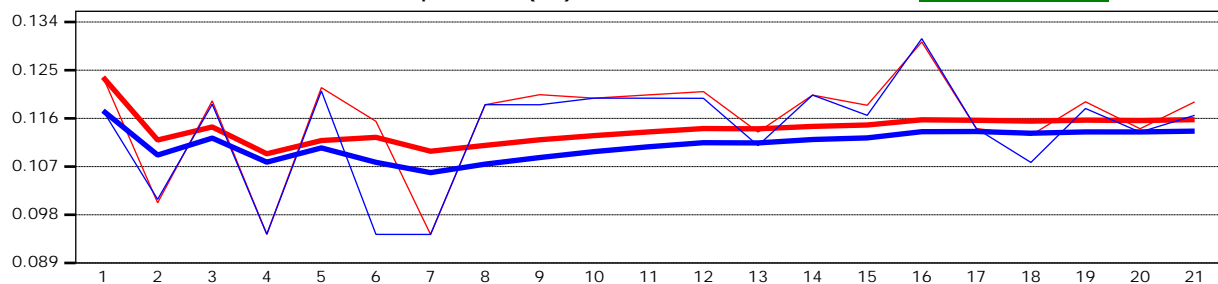
Automated beam check Peak level(dB)

PASS



Automated beam check Peak position(m)

PASS



Automated beam check Quality control warnings

No quality control warnings